

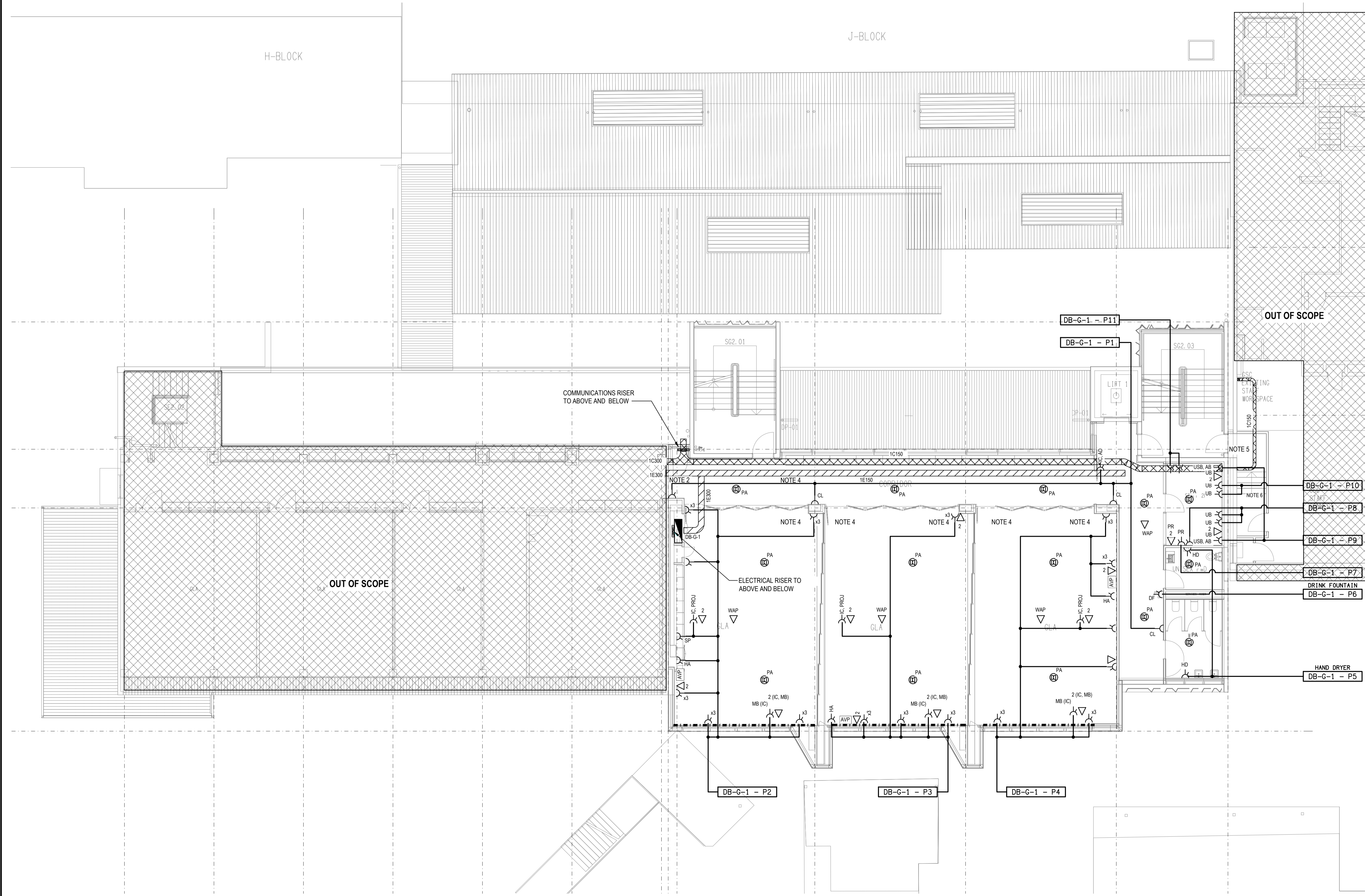
**NOTES:**

- REFER TO DRAWING E01 FOR LEGEND AND GENERAL NOTES
- CABLE TRAY TO ALLOW FOR EXTENSION AS PART OF FUTURE E BLOCK REFURBISHMENT.
- SUPPLY AND INSTALL ELECTRICAL AND COMMUNICATIONS CONDUITS CAST IN SLAB FROM FLOORBOX TO NEAREST WALL FOR RETICULATION OF CABLING.
- ELECTRICAL AND COMMUNICATIONS CATENARY/CONDUITS REQUIRED FROM THE CABLE TRAY TO EACH CLASSROOM ON EITHER SIDE OF THE MECHANICAL DUCT TO THE CLASSROOMS. LOCATION TO BE COORDINATED OVER THE MECHANICAL DUCTS WITH THE MECHANICAL TRADE.  
  
SUPPLY AND INSTALL 1E50 AND 1C50 CONDUITS FROM THE CABLE TRAY TO EACH CLASSROOM ON EACH SIDE OF THE
- MECHANICAL DUCT AS SPARE TO ALLOW FOR CABLE INSTALLATION IN THE FUTURE.  
  
SUPPLY AND INSTALL 2E50 AND 3C50 CONDUITS ON THE CABLE TRAY AS SPARE TO ALLOW FOR CABLE INSTALLATION IN THE FUTURE.
- CABLE TRAY CONTINUES TO GSC BUILDING COMMUNICATIONS ROOM ON GROUND LEVEL. ALLOW TO SEAL AND FIRE RATE PENETRATIONS. CABLE TRAY IN GSC BUILDING TO BE INSTALLED IN THE LEVEL 1 CEILING AND DOWN WALL INTO THE NEW GROUND FLOOR COMMUNICATIONS ROOM. PROVIDE HAT SECTION COVERS PAINTED TO MATCH SURFACE MOUNTED TO WHERE WALL MOUNTED IN LEVEL 1 OF THE GSC. ALLOW TO SEAL AND FIRE RATE ALL PENETRATIONS.
- REMOVE EXISTING SOCKET AND DATA OUTLETS WHERE NEW STAIR IS TO BE LOCATED. CABLING TO BE COMPLETELY REMOVED FROM OUTLET TO SWITCHBOARD/DATA CABINET.

THE COPYRIGHT OF THIS DRAWING REMAINS THE PROPERTY OF THE ELECTRICAL DESIGN GROUP.

USE FIGURED DIMENSIONS IN PREFERENCE TO SCALE.

ALL DIMENSIONS TO BE VERIFIED ONSITE.



**ELECTRICAL DESIGN GROUP**  
ELECTRICAL BUILDING SERVICES CONSULTANTS

BRISBANE: P.O. Box 15 Sherwood Qld 4075  
Phone: (07) 3278 4375  
Email: brisbane@edg.net.au  
Web: www.edg.net.au

ELECTRICAL DESIGN GROUP BRISBANE / TRADING AS:  
PTY LTD ACN 092 710 793 / ELECTRICAL DESIGN GROUP

PROJECT:  
**LOURDES HILL COLLEGE  
STAGE 1**

SITE ADDRESS:  
86 HAWTHORNE ROAD,  
HAWTHORNE, QUEENSLAND

SCALE: 1:100 SHEET SIZE: AT A1

DRAWING TITLE:  
**ELECTRICAL SERVICES  
STAGE 1A LEVEL 1  
FLOOR PLAN**

PROJECT NO. DRAWING NO. REVISION:  
**C3134a E15 C**